



*engineering the future*

**SYNCHROTECH EQUIPMENTS PVT LTD.**

**An ISO 9001: 2015 certified Company**

## ABOUT US

Synchrotech Equipment's Pvt. Ltd. takes great pleasure in introduction itself as one leading manufacturing company of process equipments, material handling systems required for oil & gas , chemical, boi- chemical, boiler and sugar Industries,

We design manufacturing and erecting of dairy process equipment's, RMC Plant, small brewery plant, process equipment's, pollution control Equipment's. We also have special expertise in designing, manufacturing, erecting and commissioning turnkey project

Synchrotech Equipments Pvt. Ltd. is know for its exception ability to design, fabrication and delivery,

## Pioneers

Mr. Shekhar Shelar

Mr. Shekhar Shelar is Managing Director & looking Design, Marketing and overall management. Leading from the front, his “Customer First” approach has enable Synchrotech Equipments Pvt. Ltd. to impressive growth over the year.

He has worked in the industry from last 13 years before venturing into own business as operation Head in manufacturing companies. He is mechanical engineer form pune university he is experience in fabrication, project management and site erection. Productive planning and timely delivery are taken by him with missionary zeal

## Pioneers

Mr. Rakesh Gadvi

Mr. Rakesh Gadvi is Director & Quality and production,

He has worked in the industry from last 15 years before venturing into own business as Quality Head in manufacturing companies. He is mechanical engineer from Kolhapur university he is experienced in fabrication, project management and site erection. Productive planning and timely delivery are taken by him with missionary zeal

## Our vision

- ❑ To be a company that serves its customer with focus on continuously increasing efficiency and ability of our products
- ❑ To always be committed to a life - long relationship with customer and work toward total customer satisfaction.
- ❑ To lay importance on bettering our quality, safety and environmental standers.
- ❑ To build partnership with employees, customer, vendor, service provider, local communities and government
- ❑ To conduct business only with the highest standards of ethics.

## Infrastructure

We have a fabrication workshop at Shelar Wasti Chikhali (approx. 8 km from Chakan MIDC) which was established in 2011, the workshop has the handling capacity 3600 MT annually also Six thousand sq. feet covered with flooring area, three thousand covered Blasting Booth and thirty thousand open. It has all the latest equipment and best facilities to take care of our customer needs.

## Design office

We have a well equipped design office located in Chikhali with many engineering related books and all the latest designing software's, which facilitate to be engineering needs of our employees.

## Human Resources : A Diverse & Highly Qualified Team

Advancing our employees & helping them to develop their talent and skill isn't just a priority concern, it's an essential part of what we do. We have built an inspirational organization, unafraid to push boundaries. As we step into future we would require to augment our capability even more comprehensively.

## Material Handling System

We also provide complete solutions on turn key basis for material handling systems including Large conveyors & chutes in any plant right from manufacturing, it's supply erection and commissioning for any plant. with innovative features and unique designs. Designed with world's latest technology,

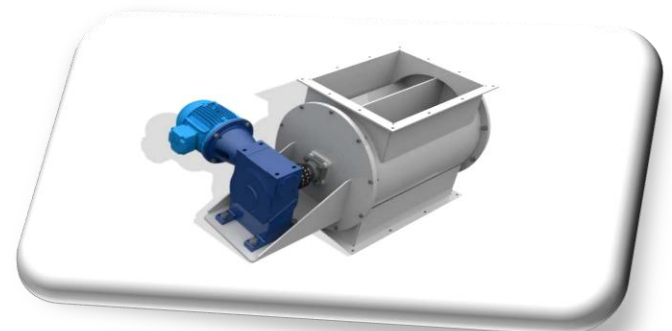
### Type :

- Belt Conveyors
- Screw Conveyors
- Bucket Elevators
- Roller Conveyors
- Screw Feeders
- Rotary Valve
- Pipe Conveyors



### Belt Conveyors

We offer for all type of industrial conveyors belt for different industries like, packaging industries, food industries, tea industries, leather industries, garments industries, electronics industries & assembling for engineering plants etc. The range includes conveyors for conveying light, medium and heavy loads along with different conveying paths like inclination, curve etc. **We provide different types of belt conveyors that are available in various materials and dimensions.**



# Tubular Drag Conveyors

Synchrotech Equipments Pvt Ltd offers a wide range of tubular drag conveyor construction materials and assemblies to meet the demands of various dry bulk products. Our tried, tested and proven cable and chain drag conveyor designs effectively satisfy all applications. Whether you require food grade hygienic equipment or standard cleaning, Synchrotech Equipments Pvt Ltd tubular drag conveyors' hygienic design and quick clean features ensure continuous cleanability and durability of your system

## Advantages

### Zero Dust Emission

The Tubular Drag Conveyor's totally enclosed, dust-tight design makes it an obvious candidate for handling and containing dusty, smelly, toxic, or even hazardous materials.

### Eliminates Multiple Conveyors

What has traditionally required two or three conveyors can often be accomplished with just one Tubular Drag Conveyor. With fewer constraints to layout and routing compared to other conveyor types, Tubular Drag Conveyors will fit in tight and congested areas without sacrificing process performance.

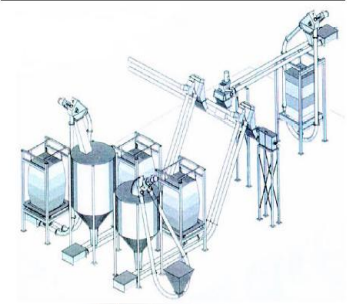
### Start/Stop Under Load

This conveyor is a high-torque/low-speed device. Not only does this mean it is very energy efficient, using less energy than other conveyor types, but it allows them to stop and re-start while fully loaded.

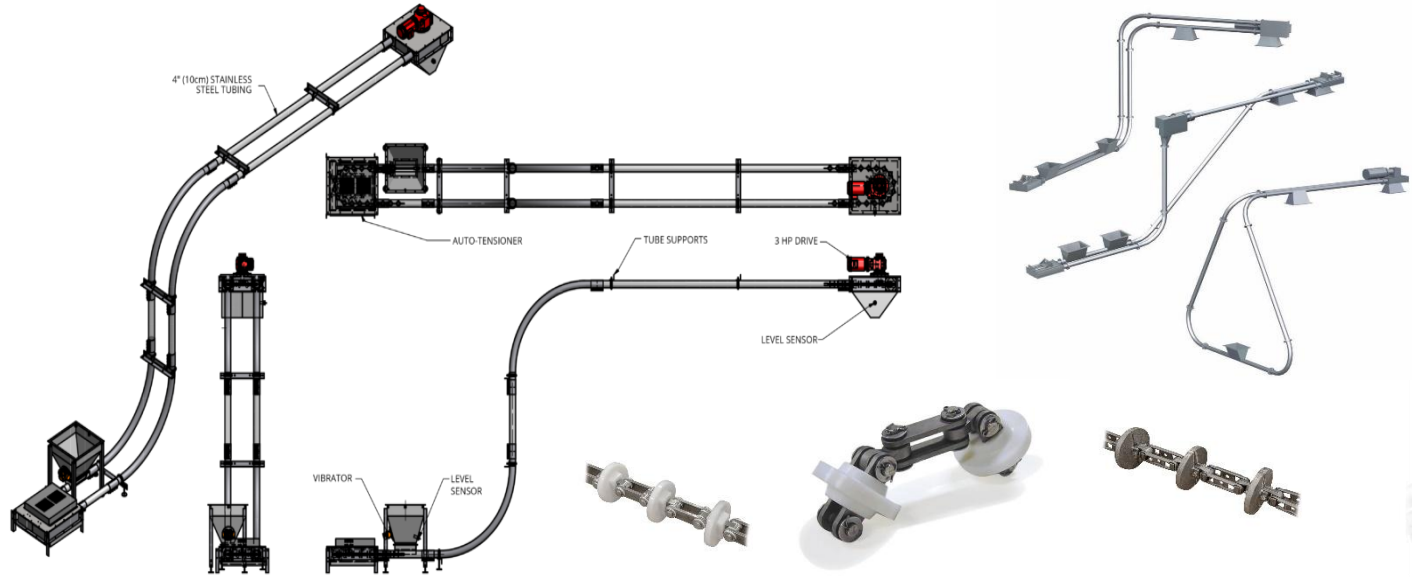
### Gentle Handling

Product captured between flights is moved en masse, exposing it to very little turbulence during its transfer. Only a small percentage is ever in contact with the pipe wall minimizing the potential for abrasive degradation.

Typical Layouts

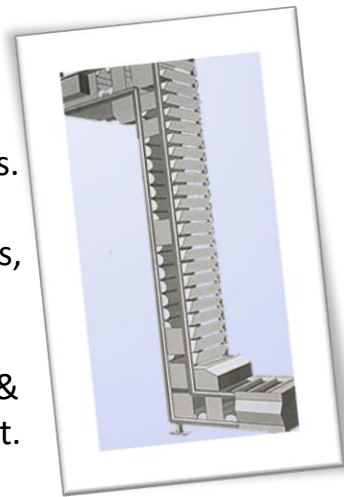


Chainflow Drag Chain Conveyor Components





We offer bucket elevator that is built on rust resistant galvanized or powder coating frames. Mostly, the bucket elevator is used in hauling bulk materials such as grain, material granules, cereals, fertilizer, etc. Available in traditional as well as modern designs, our bucket elevators can be provided with steel buckets & belt as well as plastic buckets with rubber belt.



- ❖ Belt Conveyors Systems
- ❖ Slat Conveyors Systems
- ❖ Vibrating Screens
- ❖ Hammer Mill
- ❖ Jaw Crusher
- ❖ Chain / Drag Conveyor
- ❖ Bucket Elevator
- ❖ Roller Conveyor
- ❖ Overhead Conveyors (all types)
- ❖ Telescope Conveyors
- ❖ Impact or Apron Feeder
- ❖ Stacker Conveyor
- ❖ Conveyor Galleries
- ❖ Conveyor Structures
- ❖ Feed Hopper



Screw conveyors are generally used for horizontal or low inclination transportation of various powdered or granular materials such as cement, mineral and ore processing, chemical industry, food industry etc. A screw conveyor typically has a U shaped trough with a feed point and a discharge point. A spiral blade like screw is mounted on a central shaft supported by ball bearings at the ends and hangar bearings at suitable distance along its length. A screw conveyor is generally horizontally supported and can be made to transport long distances is properly supported.



## Sugar Plants Equipments

**Rotary Dryer/Coolers** works as industrial equipment which finds use in drying/cooling of reasonably free flowing materials through introduction of drying/cooling media directly onto processing material. Here, the material which needs to be dried/cooled enters through dryer and with rotation of dryer material is raised through sequence of inner fins lining that comes fixed on interior wall of dryer.

We can offer these dryers with option of customization in different configuration and specification choices. The equipment is made available under categories -Direct Heaters/Coolers and Indirect Heaters/Coolers.



## Juice Heaters

find application in further processing of screened juice through further heating it to 65-700 C in tubular juice heater. Post heating, air floatation process is utilized for juice clarification with clear juice obtained further sent to triple set evaporator. The operations of these Juice heaters involve use of steam from boilers that assists in generating heating action. For safeguarding vapour seeping from evaporators, these juice heaters also come with support of heat exchanger that is provided between vapour and juice.

**Design Features :** Juice heaters coming in steel fabricated tubular shell structure finish The assembly of tubes present supports in the circulation of juice as well as vapour outside them

Presence of headers force juices to pass certain number of times from bottom to top and vice versa of heater as well as also restrict juice flow each time to few of tubes Juice heaters are made available in options as Vertical juice heaters, Vapour line juice heaters, Dynamic juice heaters and Condensate juice heaters

Juice heaters available in capacities from 60 m<sup>2</sup> H.S. (heating surface) to about 500 m<sup>2</sup> H.S

Juice heaters can also be designed & sized as per process capacity as well as customer requirements

**Juice Heater - Advantages :** System coming with efficient multiple passage steam distribution & circulation support

Coming with provision of quick cover opening with balancing device so as to ensure easy opening

High pressure tested leak proof finish that assists in achieving maximum process efficiency

Inter changeability provision

Positive removal of condensate

Removal of heavy & light nox gases and adequate venting support

Requires low maintenance

## Applications :

These juice heaters are used in -Heating raw, sulphur & clear juice from 300°C up to about 900°C (the end process depends on requirement and process parameters)

Suitable for use in sugar plant application



## Centrifugal Machine

**Advantages - Batch Type Centrifugal :** Presence of energy efficient drives that provides high savings in terms of power consumption  
Features innovative designs that provide for lighter basket which need lower driving power  
Features superior gravity factor that provides for effective purging of massecuite  
Optimizing wash water consumption as well as its run-off quality  
Allows for optimum molasses separation A heavy and A Light  
The elimination of steam drying process assists in enhancing crystal yield as well as in bringing reduction in bagging temperature of sugar  
Need minimum space requirements  
Require lower installation costs  
Requires reduced maintenance and operating costs using lesser higher capacity centrifugals as well as better quality sugar

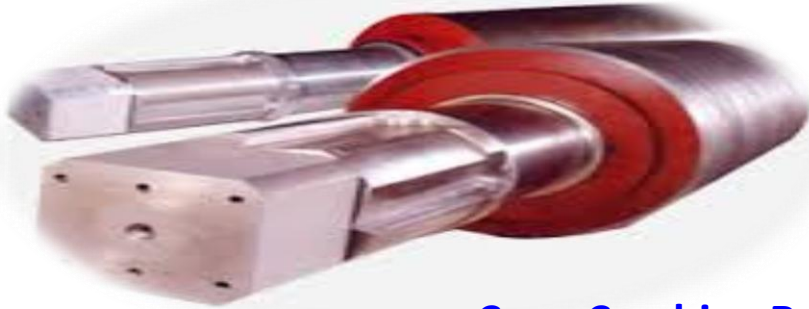


**Salient Features :** Features centrifugal basket made using quality stainless steel using optimum number of drainage holes, thus ensuring efficient discharge of molasses as well as long service life of baskets  
Durable spindle support developed using high grade forge steel with special design support that also supports in reducing stress  
Flawless finish based & flexible coupling and suspension bowl developed using quality cast steel  
Compact construction based pneumatic plough discharger made using simple & compact construction that allows for ease of maintenance  
Advanced brake pad assembly that comes in compact design provided for emergency application besides supporting requirements of normal regenerative electrical braking  
Advanced sugar washing system developed using stainless steel pipe and specially designed nozzles  
Flawless functioning electric drive & process panel that are energy efficient DC drives and come fully sired for supporting fully automatic operations using PLC  
Electric drive and process panel also have compatibility with central plant computer and also come with pole charging /thyristor drives for smaller capacity centrifugals  
Delivers continuous centrifugal operations with advantages of better sugar quality, higher capacity, lower molasses purity and reliable operations  
**Applications :** These are used generally on high grade massecuites as well as provide quality crystals

## Other Sugar Equipments



**Sugar Cane conveyor**



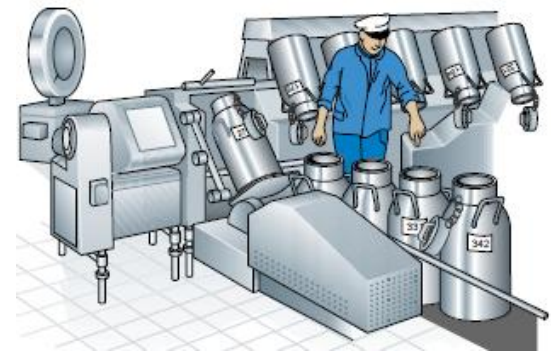
**Cane Crushing Rollers**



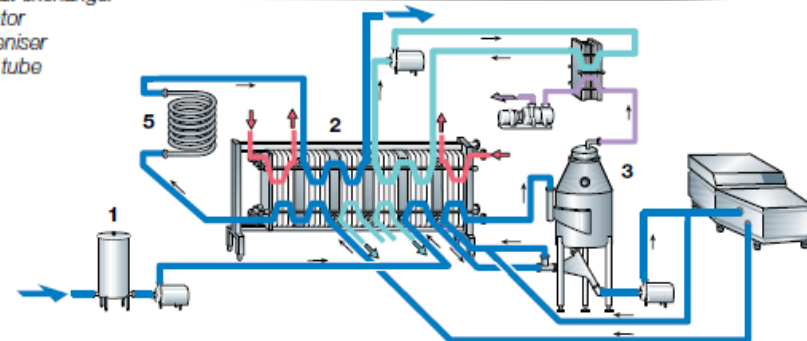
**Sugar Bag Handling Conveyor**

## Dairy solution

Total integrated plant control with solution of dairy process and products like Designing a process line, Process control and Automation, Process line for a circulation evaporator, Milk processing including a micro-filtration, MF, plant. Refrigeration - Pasteuriser cooling system, Plate heat exchanger for heating and cooling, Decanter centrifuge, Intermediate storage tank for temporary storage of processed milk, Silo tanks, Intermediate storage tanks, Mixing tank with welded-on heating/cooling channels, homogeniser, Plate cassette evaporator, Milk treatment plant with Deaerator, Pipes, valves and fittings,



- 1 Balance tank
- 2 Plate heat exchanger
- 3 Evaporator
- 4 Homogeniser
- 5 Holding tube



## Mini Dairy Plants

We use the latest and best resources in terms of fabrication process and use of technology while executing the turnkey project. In addition, during the implementation of the mini dairy project.

We install various other equipments such as:

- ❖ Road Mill Tanker
- ❖ Ribbon blender
- ❖ Pilot dryer
- ❖ Multi purpose kettle
- ❖ Batch pasteurizer
- ❖ Cream ripening tank
- ❖ Bulk milk coolers



We install various other equipments as below:

❖ **Butter Machine Equipments**

- Butter Modular
- Butter Melter
- Butter Chum

❖ **Chee Machine**

- Chee Plant
- Chee settling Tank
- Chee Kettle
- Chee boiler

❖ **Milk and milk product advance packing System**



## Micro Brewery

Our brewing solutions reduce costs, accelerate production processes and achieve consistently high beer quality while combining profitability with Sustainability



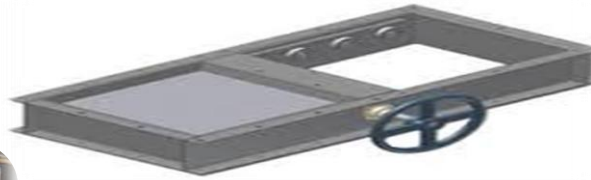
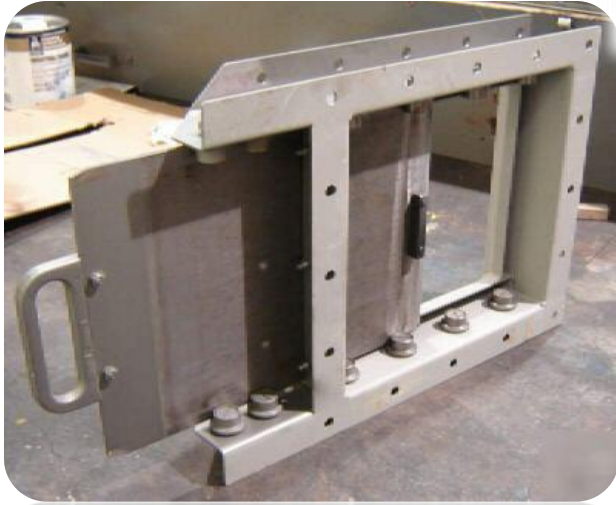
### HIGH QUALITY MANUFACTURING PROCESS

- ❖ 100 % TIG welding
- ❖ Laser welded heat exchangers (pillow-plate)
- ❖ Automated grinding and polishing of welds and surfaces
- ❖ Certified materials
- ❖ Traceability of materials, mastering of technological processes and control procedures in the production

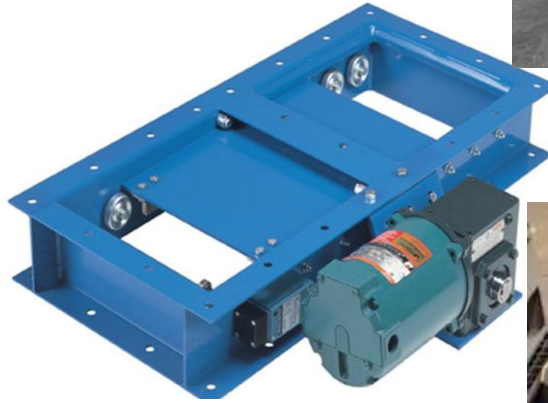




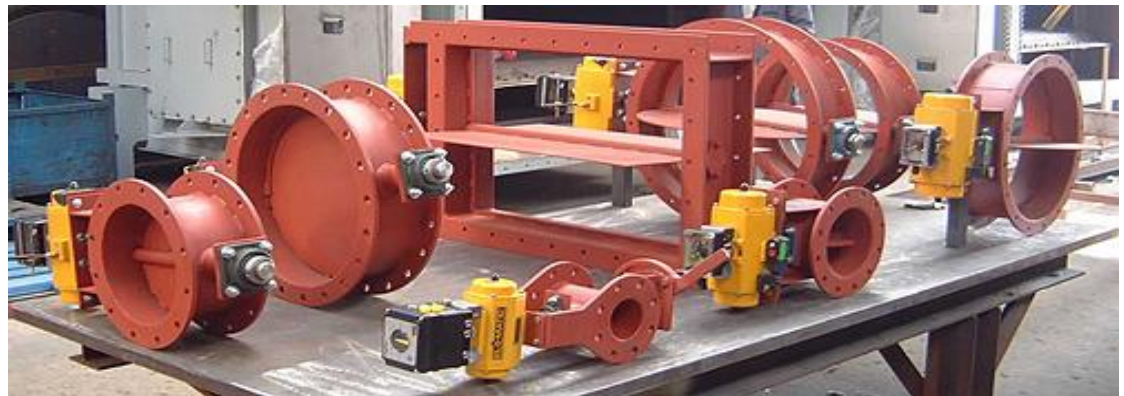
# Boiler Products



**Slide Gate**

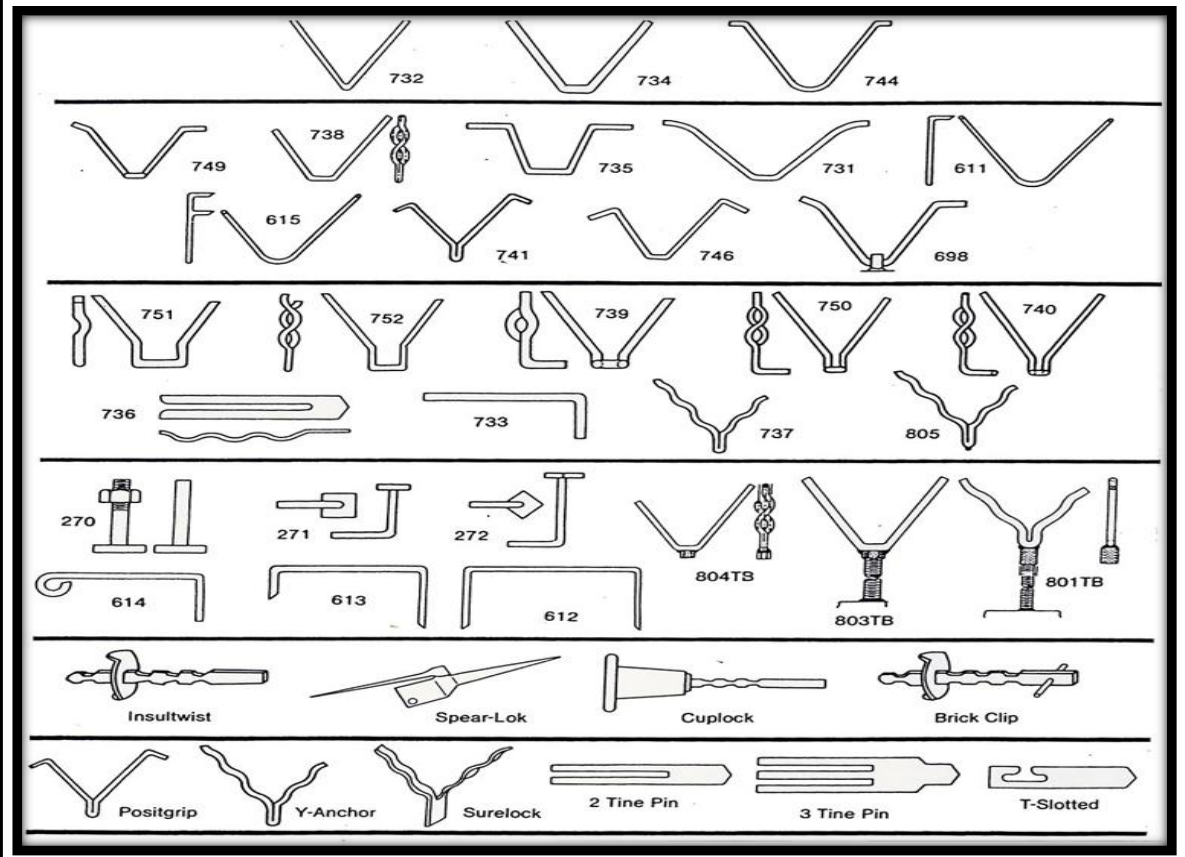
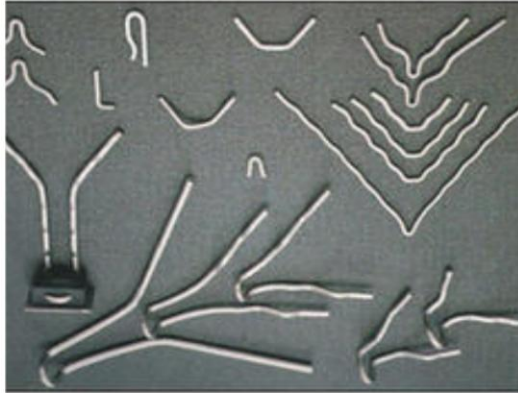


**Damper**



# Photo Gallery Insulation & Refractory Holding Anchors

## REFRACTORY ANCHOR



# Photo Gallery Pollution Equipment's



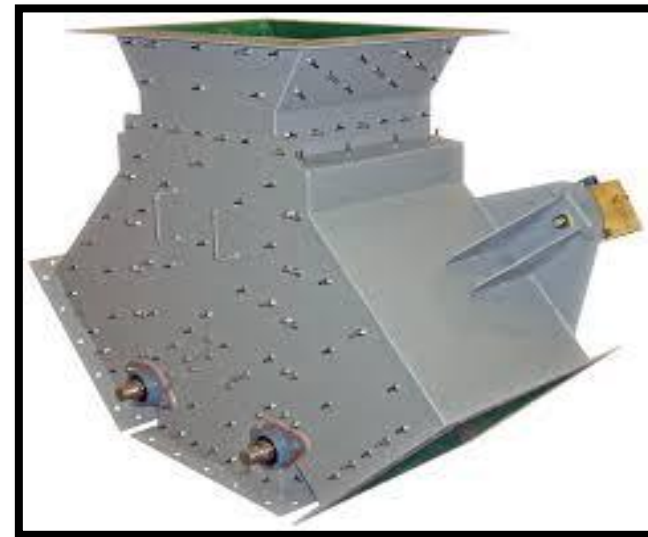
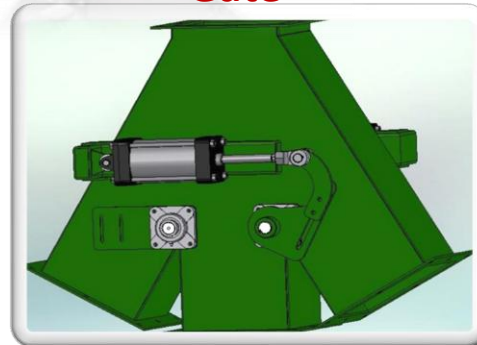
**Air Pre Heater**



**Air pollution Equipments**



**Diverter gate / Flap Gate**



# Photo Gallery



## Quality Control

Good quality is our trade mark and we constantly strive to maintain the same.

We perform all the desired necessary check and tests as per relevant standard code. All our equipments go through rigourous test like D.P. test, radiography test, dimensional inspection, hydrostatic test, pneumatic test, vacuum/ stimulation test to ensure top quality before being dispatched to our customer.

A rigourous quality assurance program ensure the equipments manufacturing meet the customer specification and required standard.

# Here is a sample of our clients



NIMHANS  
(INSTITUTE OF NATIONAL IMBECILITY)



thyssenkrupp



CONSISTENCY IN PERFORMANCE



Generating The Economical Way



ALONG IN THE SERVICE OF THE NATION



INNOVATING TOGETHER



TERRAVISTA  
SOLUTIONS P. LTD  
... for Sustainability



OUR COMMITMENT TO SUSTAINABILITY



Karnataka Co-operative Milk  
Producer's Federation Ltd (KMF)



ALONG IN THE SERVICE OF THE NATION



BIDAGANDY



Godavari  
Biorefineries Ltd.



TERRAVISTA  
SOLUTIONS P. LTD  
... for Sustainability



MURUGESH R. NIRANI  
GROUP



## Safety , healthy & Environment

Safety, healthy & clean working environment (SHE) is a non negotiable priority at Synchrotech Equipments Pvt. Ltd. Safety and healthy of our people is our paramount concern. Hence, apart from a comprehensive (SHE) policy, we have dedicated teams, system & programs in place at our facility to optimize our employees safety at wok. After all safe & healthy working condition contribute a great deal to employee motivation.



SYNCHROTECH EQUIPMENTS PVT. LTD.

Head office : Gat No.1534, Sonawane Wasti, Chikhali Talawade Road,  
Chikhali, Pune -411062.Tel:. +91 9823619975.

Work : Gat No.1567, Shelar Wasti, Chikhali Talawade Road,  
Chikhali, Pune -411062.Tel:. +91 9823619975.

Email : [info.synchrotech@gmail.com](mailto:info.synchrotech@gmail.com)